

**Network IP Digital  
Media Player ID# 516**



**Operation Manual**

## Introduction

The Network IP Digital Media Player provides the solution for both file data transfer and update via the Internet and being able to access your picture, movie and audio files without a PC.

Fully compatible with most Internet network connections like Ethernet, Fixed IP address, ADSL PPPoE, Dynamic IP(DDNS) etc.

You can view all this on any TV display or monitor with audio. Fully remote controlled for easy selection of files and output displays.

## Features

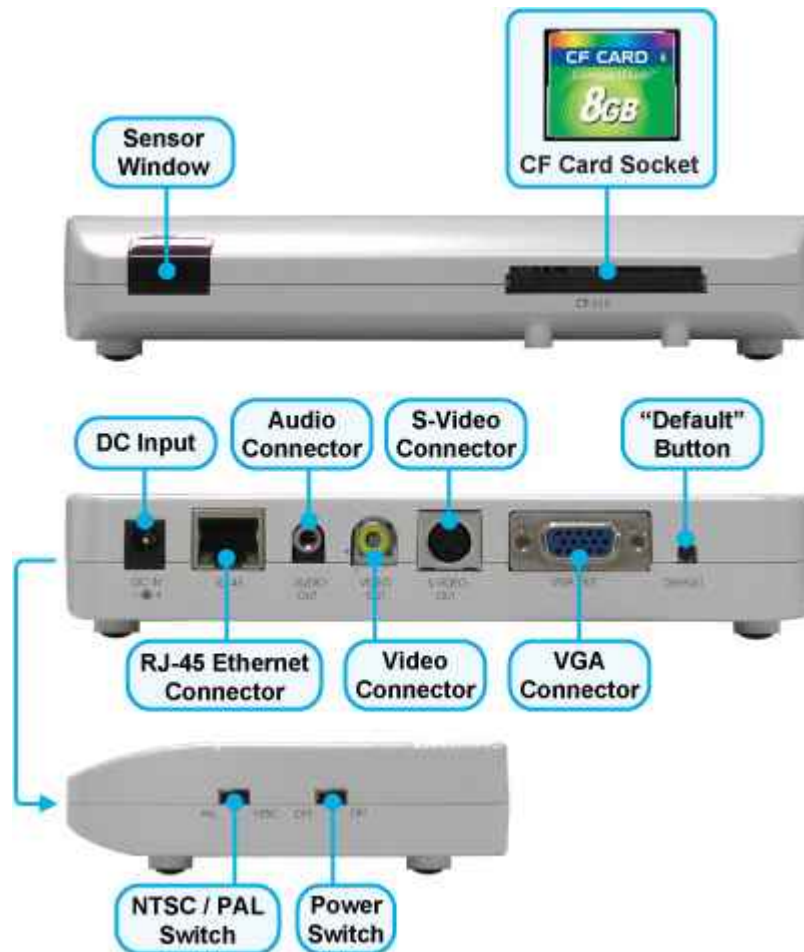
### **The Network IP Digital Media Player has many great features including:**

1. -NTSC/PAL selectable.
2. -Supports Composite, S-Video and VGA Video displays.
3. -Digital Audio output for connection to Audio Amplifier
4. -Supports CF(Compact Flash) Card for media files.
5. -Supports multiple Photo, Music and Movie file formats.
6. -RJ45 connection for Internet connection.

### **Some of the Network features include:**

7. -Ethernet RJ-45, 10/100 Base-T.
8. -Network Remote Control through IE Browser.
9. -Embedded FTP Server (Upload, Delete, Download, Rename Files of CF Card.
10. -Network Services: HTTP(user interface), FTP(manage files), PPPoE(Fixed IP address recommended) Dynamic DNS and Firewall Port forwarding-virtual IP addresses)
11. -Supports WIN 98SE, 2000, ME, XP (Microsoft IE 5.5/6)
12. -English Only Software operation.

## Connection



**IR SENSOR :** Infrared input of remote controller.

**POWER ON/OFF and LED :** Switch and Power indicative LED

**NTSC/PAL :** Selects NTSC or PAL video, system.

**Stop/ Ray/Pause :** Audio or video display will be stop or restart.

**Up/Down/Left/Right :** To select item on the OSD Menu.

**MUTE, VOLUME/ +, VOLUME/- :** Change the Volume of Audio

**SETUP :** Press this button to setup the settings of display.

**CARD SELECTION :** Not used in *this product*.

**EDIT :** Delete, Properties, Rename function

**UP/DOWN//LEFT/RIGHT/ENTER:** To select and confirm item on the OSD

**PgUP/Do:** go to the previous or next page or image.

**MUSIC/PHOTO/MOVIE/FILE:** Display only music/photo/movie or ail files

**STOP/ PAUSE/ PLAY/ REPEAT/ REW/ FF/ PREV/ NEXT:**Playback function

**S-TIME** : Slide show time adjustment 1; 3; 5,10, 30, 60 seconds.

**S-MODE**: Slideshow effect with sequential, random etc

**S-MUSIC**: Select the background music when slideshow.

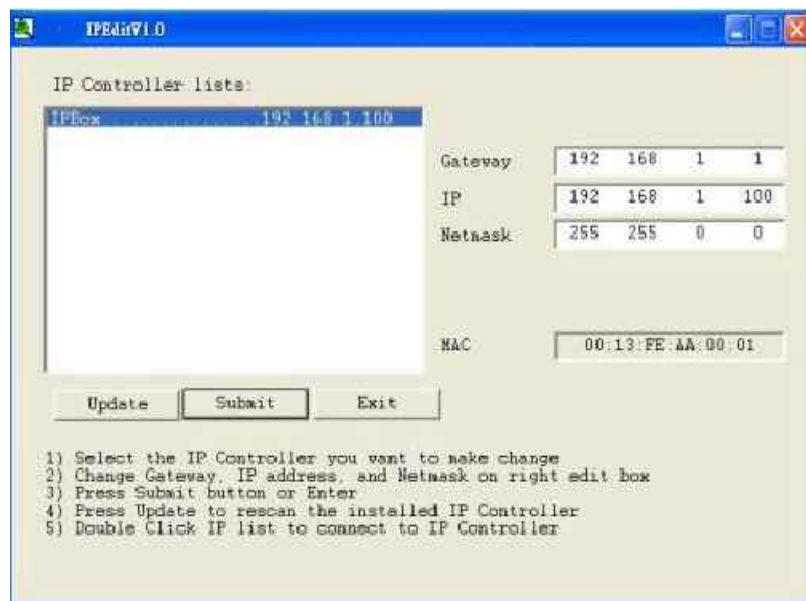
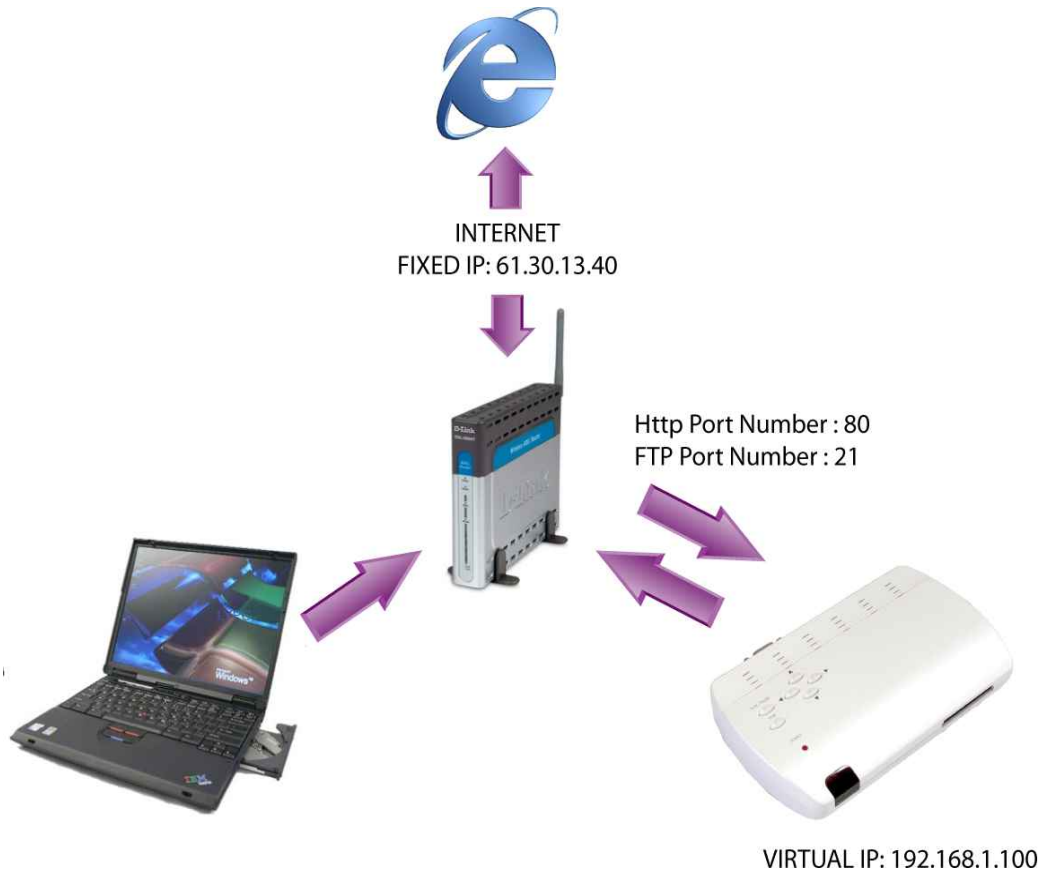
**ROTATE/ZOOM/MIRROR** : Select the effect of display

**OUTPUT MODE** : selection video, s-video, YCbCr, YPbPr and VGA output..

## Remote Control



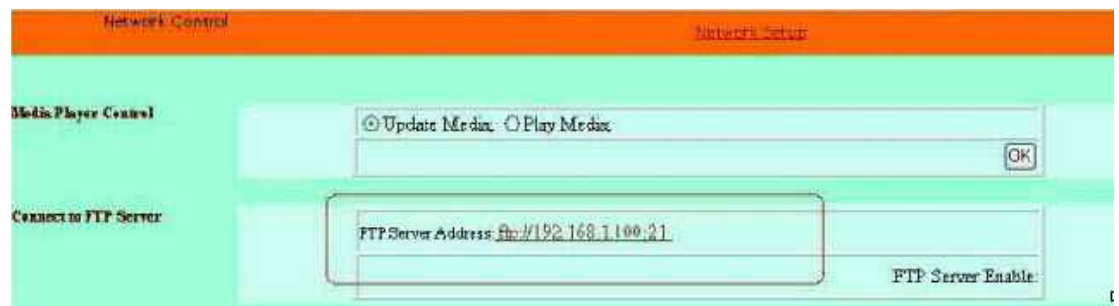
Plug your RJ-45 cable into your router



- Execute the "IpEdit.exe" in the CD." and click "Update"  
"http://192.168.1.100/" has been listed in the left side, and double click "...http://192.168.1.100/" to login the IP Controller
- Edit the IP Address, it is depend on your router, if your router IP is 192.188.0.1 (use the command : ipconfig to get the information), then the IP Media Player need to change the range "192.168.0.2"~192.168.0.254
- Default user name: **Root**            Default password: **admin**
- Please remember to change the IP Address one more time, then the IP address will be stored in the IP Media Player



Select "Update Media" to startup ftp server, or select "Play Media" to Play file.



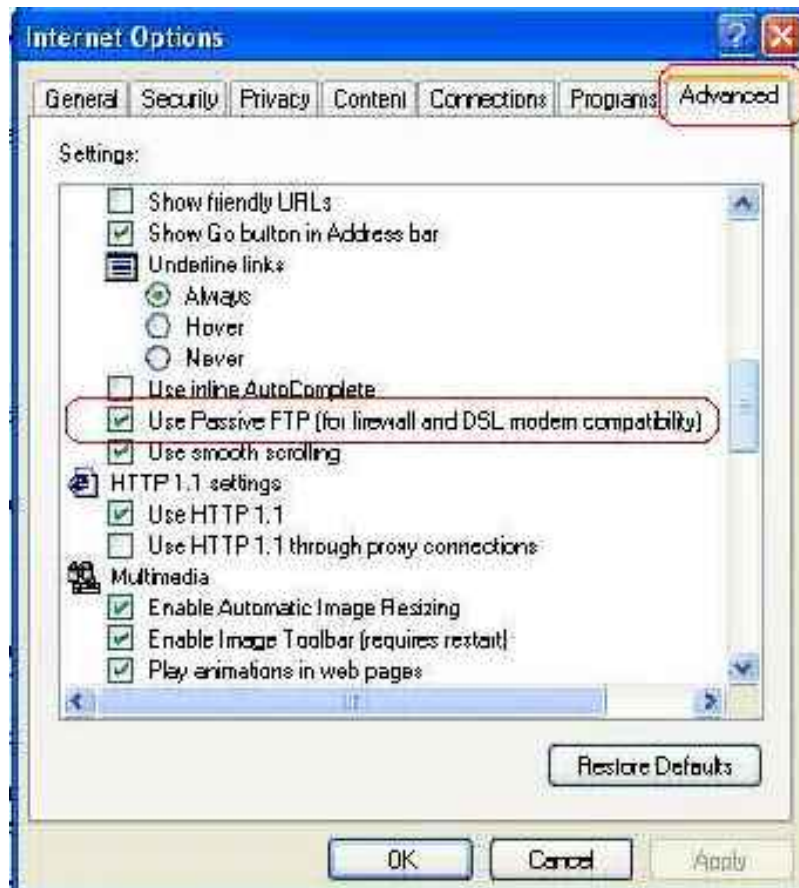
Setup the Firewall in the router

Log in from Internet all over the world:



Execute Internet Explorer and type the Real IP address used by the router  
ex : <http://61.30.13.14.80/> or <http://61.3.13.40/>

If you cant connect to the FTP folder, Please Add or Remove the item  
Internet Explorer->Internet Options->Advanced->Use Passive FTP (for  
firewall modem capability) then close the FTP folder and try one more  
time.



If you also cant connect to the FTP folder, please refer to **HELP 4.3**  
**Limitation of FTP Protocol** on the CD

## Specifications

1. -Video System: NTSC/PAL.
2. -Video Outputs: Composite, S-Video, VGA 15 pin D-sub.
3. -Audio Outputs: RCA Phono-jack.
4. -Video Resolution: 640x480 to 1600x1200.
5. -Internet Output: RJ-45.
6. -Power Supply: 5vDC 2A